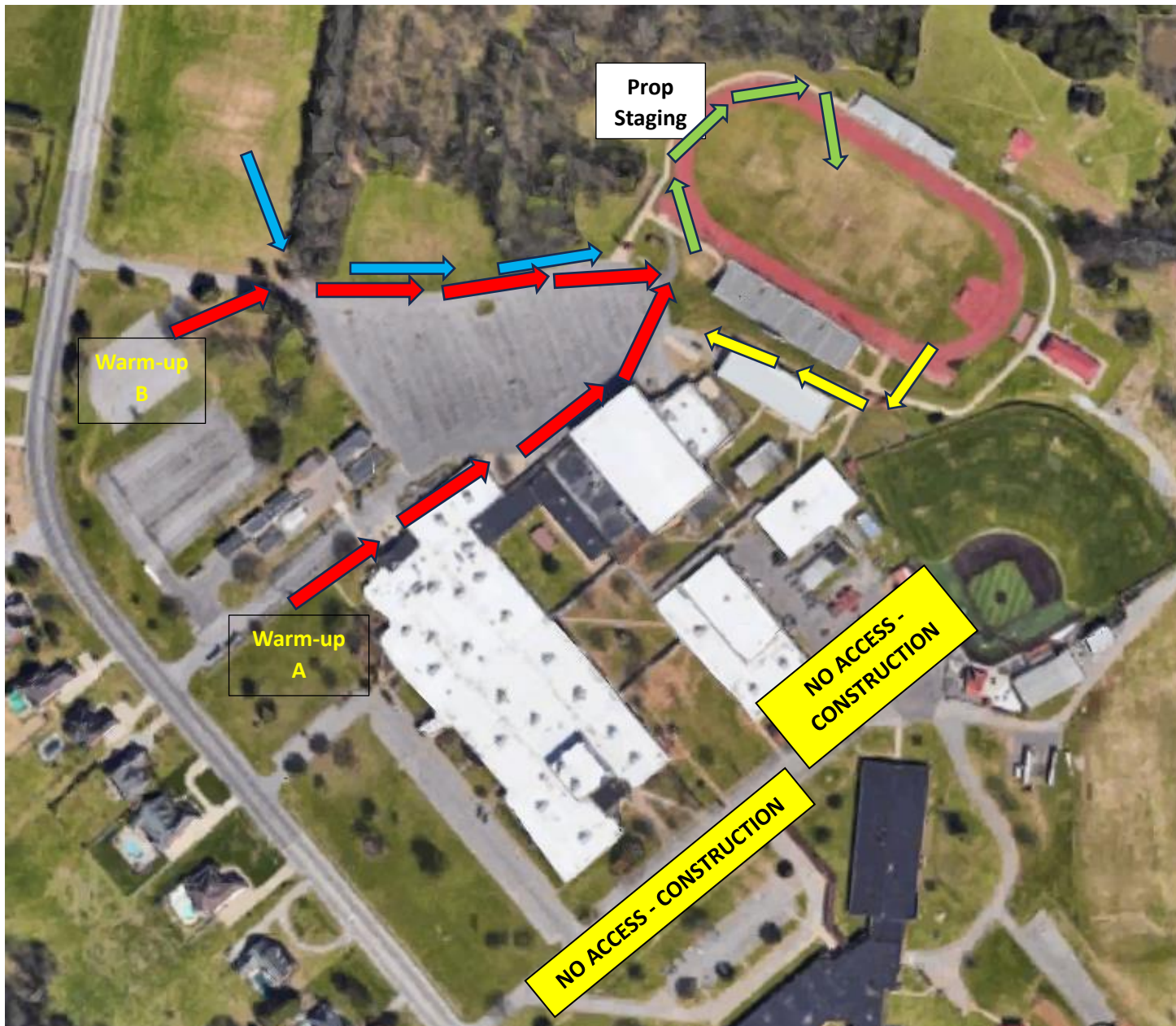


Stones River Classic 2023 – Contest Flow



– Red arrows indicate **band flow** to/from warm-up areas to stadium. Front Ensemble entrance/exit is the same access road pathway.
***Winds/Guard/Percussion have a new exit path.**



– Green arrows indicate **Band FIELD ENTRANCE.**



– Yellow arrows indicate ***NEW Band FIELD EXIT.**



– Blue arrows indicate **spectator entrance/exit.**